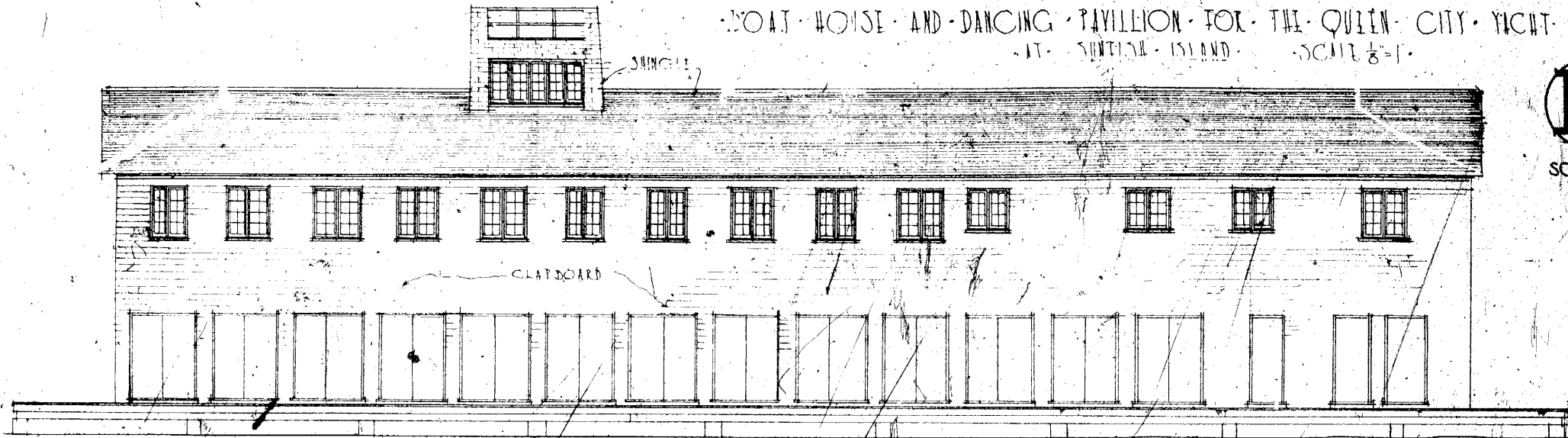
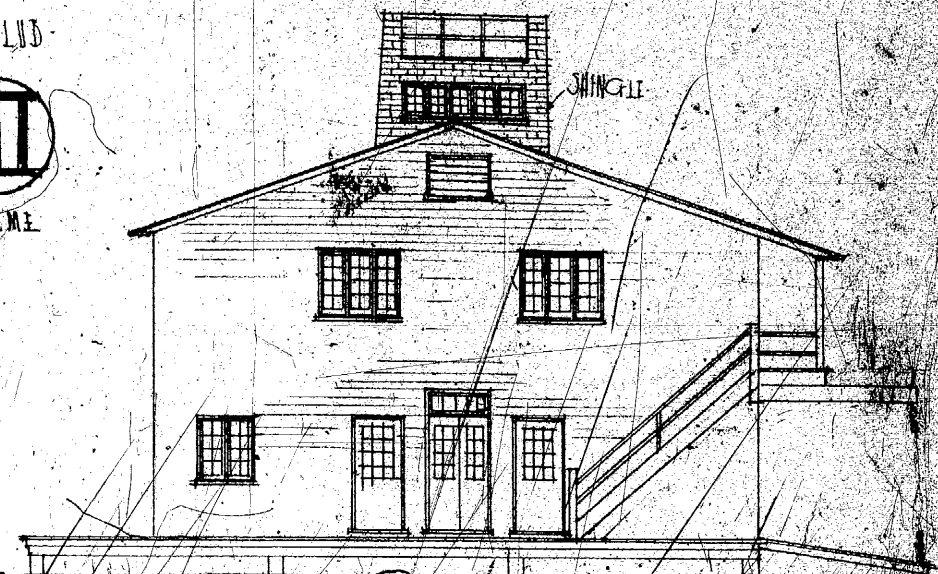


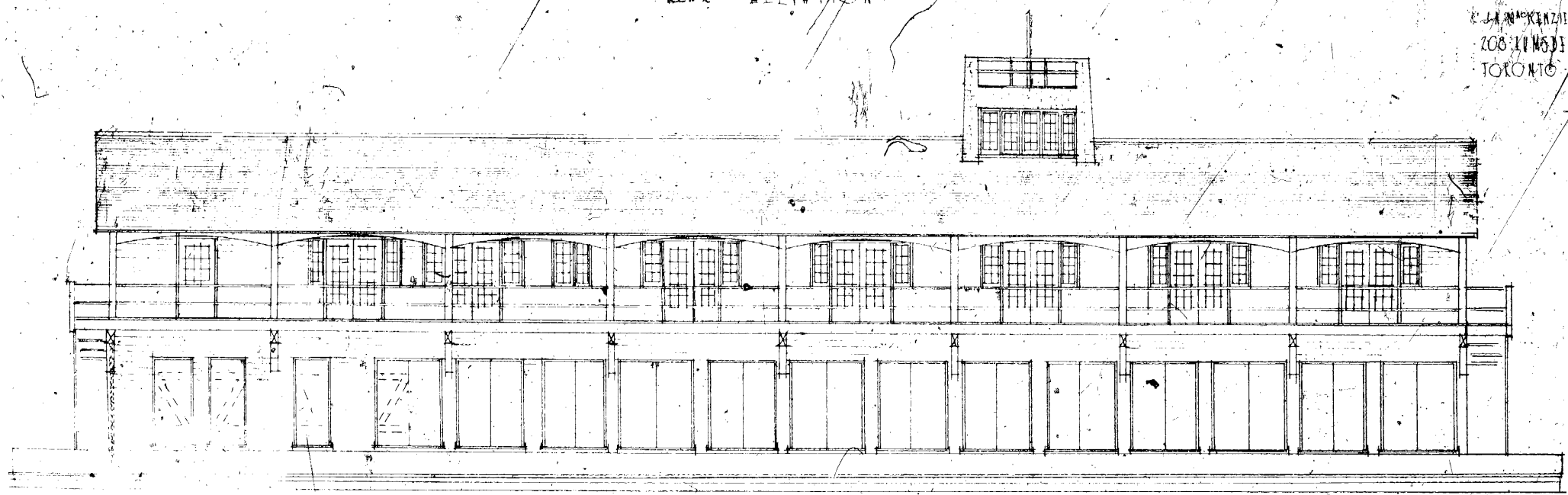
BOAT HOUSE AND DANCING PAVILLION FOR THE QUEEN CITY YACHT CLUB  
AT SUNTIDE ISLAND SCALE 1/8"=1'



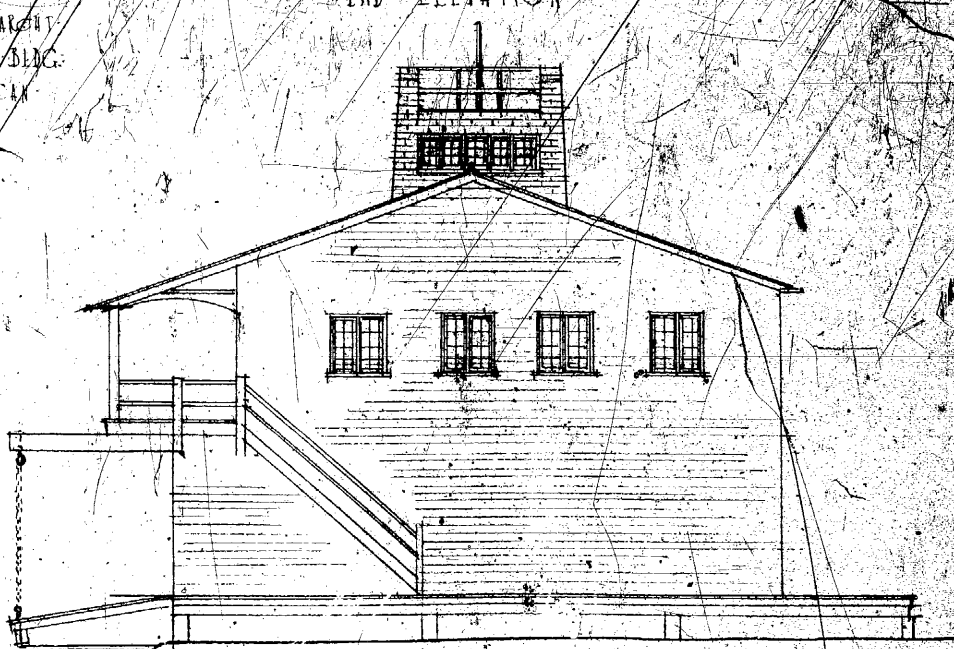
REAR ELEVATION



END ELEVATION



FRONT ELEVATION



END ELEVATION

E. J. MACKENZIE ARCHT.  
208 KINGSTON BLDG.  
TORONTO CAN.